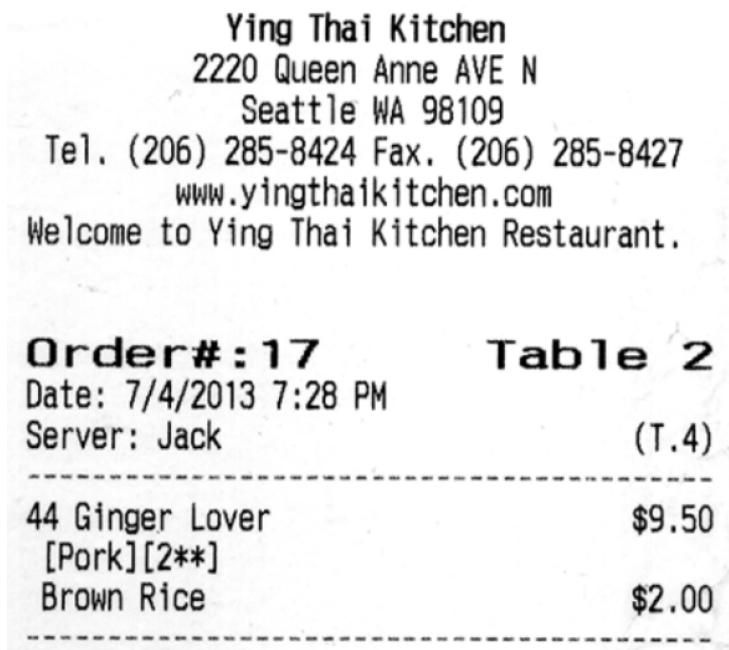


Task: Finding the Missing Part!

1. If you purchased these shoes, how much money would you save?



2. Use the receipt below to calculate the total bill. Include tax of 6.5% and a tip of 18% on the total (before tax).



3. If a model of the Statue of Liberty is 4.65 cm from the base to the torch and the scale factor is 1 cm = 10 meters, find the actual height of the statue of liberty.

